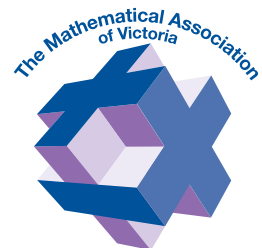


## Valuing Mathematics in Society



"Cliveden"  
61 Blyth Street  
Brunswick Vic 3056  
Telephone: 03-9380 2399  
Facsimile: 03-9389 0399  
Email: [mavoffice@mav.vic.edu.au](mailto:mavoffice@mav.vic.edu.au)  
Website: [www.mav.vic.edu.au](http://www.mav.vic.edu.au)

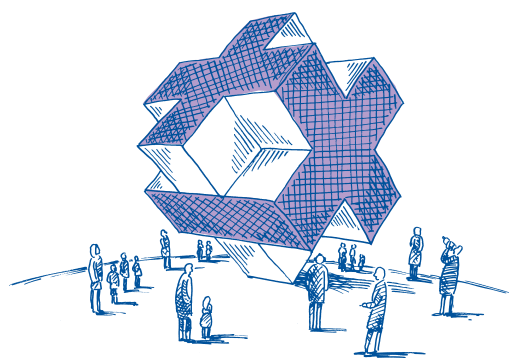
## What is the MAV?

The Mathematical Association of Victoria is a membership driven Association that provides a voice, leadership and professional support for mathematical education. Through our programs and services we aim to promote mathematics, mathematics education, and its importance to society.

Our Association has over 1,700 members from all sectors of education, and has been an active non-profit professional Association for nearly 100 years.

## What does the MAV provide for you?

- Support services and expert advice from our professional staff
- Regular professional journals for members: *Prime Number*, *Vinculum*, *Australian Mathematics Teacher*, *Australian Primary Mathematics Classroom*, *Australian Senior Mathematics Journal*
- Extensive catalogue of publications and teaching resources for both primary and secondary teachers
- Regular professional development (PD) opportunities for primary, secondary and TAFE teachers
- PD and student activities are accessible in both metropolitan and regional venues
- Annual conference for over 2,000 Victorian, interstate and overseas mathematics educators
- Networking opportunities with other professionals both locally, nationally and internationally
- Hassle-free PD program - we organise an event to suit your specific needs
- Comprehensive website at [www.mav.vic.edu.au](http://www.mav.vic.edu.au)
- Student activities - Maths Games Days, VCE Revision Lectures, Maths Talent Quest and National Maths Summer School



- Representation on national and state committees — AAMT Council, Council of Professional Teaching Associations of Victoria (CPTAV), and various Education Department committees
- Information about current issues, new developments and trends in mathematics education
- Free public lecture series focussing on topics of mathematical interest
- Regular email list keeping you up-to-date with all our activities

## Want more information?

Call our Member Services Officer on 03 9380 2399 or email [mavoffice@mav.vic.edu.au](mailto:mavoffice@mav.vic.edu.au). Alternatively, visit our website at [www.mav.vic.edu.au](http://www.mav.vic.edu.au)

## Membership options

### Institutional membership provides:

- Special member rates at MAV PD events for ALL YOUR STAFF
- Special rates for Hassle-free PD
- Our monthly newsletter *The Common Denominator*
- Our quarterly journal - *Prime Number* (primary) and/or *Vinculum* (secondary)
- Affiliation with the Australian Association of Mathematics Teachers (AAMT)
- Special rates for small schools
- Multi-campus schools with A SINGLE ADMINISTRATION can choose to take out one institutional membership and receive member rates for all staff at PD events. In addition, a journal-only subscription (below) could then be used to receive newsletters and journals at all campuses.

### Individual membership provides:

- An extra 10% off member rates for PD registrations
- Our monthly newsletter *The Common Denominator*
- Our quarterly journal - *Prime Number* (primary) and/or *Vinculum* (secondary)
- Affiliation with the Australian Association of Mathematics Teachers (AAMT)
- Member rates for national journals

# Valuing Mathematics in Society

## What are the benefits of MAV membership?

- Special rates for all professional development activities, including the annual conference
- Reduced rates for Association books and resources
- Discounts on entry to the Maths Talent Quest
- Access to professional journals, currently:
  - *The Common Denominator* — monthly
  - *Prime Number* (primary education) — quarterly
  - *Vinculum* (secondary education) — quarterly
- Discounted rates for national journals:
  - *Australian Mathematics Teacher* — quarterly
  - *Australian Primary Mathematics Classroom* — quarterly
  - *Australian Senior Mathematics Journal* — bi-annually
- Involvement in a highly respected, proactive professional association fostering the promotion of mathematics and mathematics education
- Automatic affiliation to the Australian Association of Mathematics Teachers (AAMT)

## Who can be a member?

- All mathematics teachers or those qualified in mathematics and/or education
- Institutions teaching mathematics
- Any person studying mathematics or education as part of a full-time or part-time course at a tertiary teaching institution
- Any person who is not qualified or represents a publisher or other group with a connection to the teaching of mathematics or mathematics teaching (Associate membership)

## Journal subscription only

Schools or individuals may also choose to take out a subscription to our newsletter and/or journals only. This is particularly useful for:

- interstate/overseas schools or teachers who are unable to attend MAV events
- individuals or retired teachers who may not want to attend MAV events.

**It also allows institutional members, especially large schools or multi-campus schools/TAFEs to receive extra copies of the newsletters and journals to ensure that more teachers can have their own copies.**

Please note: This option does not confer any membership rights, and will not allow you to access any member benefits and discounts or national journals from AAMT.



"Cliveden"  
61 Blyth Street  
Brunswick Vic 3056  
Telephone: 03-9380 2399  
Facsimile: 03-9389 0399  
Email: [mavoffice@mav.vic.edu.au](mailto:mavoffice@mav.vic.edu.au)  
Website: [www.mav.vic.edu.au](http://www.mav.vic.edu.au)